

## 432 AND ABOVE EME NEWS JUNE 2006 VOL 34 #6

EDITOR: AL KATZ, K2UYH; SCHOOL OF ENGINEERING, THE COLLEGE OF NEW JERSEY, PO BOX 7718 EWING, NJ 08628, TEL (W 609-584-8424) OR (H 609-443-3184), FAX (609-631-0177), E-MAIL [a.katz@ieee.org](mailto:a.katz@ieee.org)  
PROD/MAIL: BRIAN MULLANEY, KB2TIS/TOM KIRK, KA2VAD (609-584/8424), E-MAIL [mullaney@mecc.edu/kirkt@litech.com](mailto:mullaney@mecc.edu/kirkt@litech.com)  
NETNEWS EDITOR: G4RGK, DAVID DIBLEY, E-MAIL [g4rgk@btinternet.com](mailto:g4rgk@btinternet.com) (based on K1RQG's Netnotes and Reflector News)  
EME NETS: 14.345, 10 AM ET SATURDAY AND SUNDAY (AFTER VARONET ENDS ON SUNDAY)  
NET CONTROL AND SKEDS COORDINATOR: JOE, K1RQG, TEL (207-469-3492), E-MAIL [k1rqg@aol.com](mailto:k1rqg@aol.com)  
EME DIRECTORY: <http://www.dl4eby.de/>, DL4EBY/DK0TU, KLAUS TIEDEMANN, TEL (49-30-7955467), E-MAIL: [tklaus@snaflu.de](mailto:tklaus@snaflu.de)  
NL EMAIL DISTRIBUTION and EMAIL LIST CORD: WARREN, W2WD [wbutler@comcast.net](mailto:wbutler@comcast.net) [TXT OR PDF OR "ON WEB" NOTICE ]  
EME STANDINGS: DAN GAUTSCHI, HB9CRQ/HB9Q E-MAIL [hb9crq@hb9q.ch](mailto:hb9crq@hb9q.ch) OR SEE HIS WEBPAGE AT [www.hb9q.ch](http://www.hb9q.ch).  
THE NL WEB VERSION IS PRODUCED BY W6/PAOZN AND AVAILABLE AT <http://www.nitehawk.com/rasmit/em70cm.html>

**CONDITION:** I am sure this May will be remembered. The 1296 leg of the DUBUS/EWW EME Contest produced good activity, if only mixed conditions. Many stations felt Sunday conditions were quite good. I was also able to generate some activity, if not a lot of QSOs on 26 and 29 May with a last minute 23 cm dxpedition to Bermuda – see my report. CT3/DL1YMK is now QRV from Madeira on 23 cm and giving out contact with an excellent signal. Michael will have switched to 70 cm by the time you read this – see the May NL for more dxpedition information. 70 cm did not fair as well as 23 cm in May and the beginning of June. Let all make an effort not to miss the next 70 cm Activity Event Time (AET) on 15 July 2330 to 0130 and 16 July 0600 to 0800.

**F1ANH A SILENT KEY:** It is with great sadness that I report the passing of Jean-Pierre after an extended battle with cancer. I can remember when he first showed up on 23 cm EME. At that time CW was new to him, but he had a big signal and soon was a highly proficient EME operator. Jean-Pierre was active on both 23 and 70 cm and was QRV to the end. He also has generated activity by operating with a small portable 23 cm EME station. He will be greatly missed.



F1ANH at EME Conference in Paris

**ARRL MICROWAVE EME CONTEST PROBLEM:** Al, W5LUA [al.ward@avagotech.com](mailto:al.ward@avagotech.com) reports that the Microwave EME Contest has been scheduled on the same date as the ARRL's Sept. VHF Contest. This could be a major problem because in NA the terrestrial 13 cm calling frequency is 2304.100 MHz, which happens to be the primary worldwide EME calling frequency for those of us that can not transmit at 2320 MHz. A major clash of EME and contest operators in NA could occur if these contests are held on the same weekend. The moon rises in the early evening, which will aggravate the QRM problem, especially when NA stations call Europeans on 2304 and listen on 2320. The same will happen on the setting moon with JAs. 10368.1 MHz is also used by both terrestrial and EME operators. With upwards of 20 kHz of Doppler at 10 GHz, local terrestrial contest operator will never know where the EME stations are really listening. EMEers can unknowingly QRM terrestrial contest operations. If we move the EME contest to the weekend of 16/17 Sept, there will be a conflict with the ARRL's 10 GHz Contest, but there will be less

conflict because moonrise is in the middle of the night when terrestrial 10 GHz operations are at a minimum. In fact, I can imagine that some 10 GHz weak signal folks might try to aim their 1 and 2 meter dishes at the moon on 10 GHz and hear some EME signals. What better way to encourage terrestrial 10 GHz operators to try EME. The higher declination of the 16/17 Sept weekend will allow much more moon time. Al encourages EME operators to support changing the date to the 16th/17th. He asks that you send your feeling to him, whether or not you agree with the change. He will then forward the results on to the ARRL. [This is a tough one, but I see the wisdom in Al's proposal and support the change].

**9HITX:** David [davcut@onvol.net](mailto:davcut@onvol.net) in JM75fu writes – After a number of attempts I QSO'd K2UYH on JT65c. The main problem was not to with my small station (2 x 8.5 w/ OPT 70 yagis and TE 4450G 140 W PA), but the large frequency drift from my IC706 on TX/RX. It now seems that problem has been solved with a Precision Crystal heater that was fixed this week. I will remain QRV on 70 cm for at least a month, than I will dismantle antennas and put up the 6 m beam again.

**F2TU:** Philippe reports working on 29 April on 13 cm JA8ERE (549/549) for initial #52, OZ4MM (569/569), G3LTF (549/559) and W9IIX (539/559).

**F5SE:** Franck [kozton@free.fr](mailto:kozton@free.fr) reports -- I am back at work on my dish project. The dish itself is under restoration. The rotten parts are being changed or repaired. The driving motors are now working OK. These are computer driven high power brushless motors. I have implemented the drive control instructions on my "Moon Forecaster" software, and all works fine! I am now working on plans for the rotating carriage and elevation drive. A friend, who is a recently retired "steel carpenter" is helping me. I hope the project will be well advanced by the time of the EME conference. I am looking forward to the pleasure of meeting with all the EMEers there.

**G3LTF:** Peter [g3lft@btinternet.com](mailto:g3lft@btinternet.com) report for May -- I was on for the 23 cm DUBUS contest and found conditions variable. I did work a few new ones as well as many old friends. The declination was a bit low for me and I had no window to VK at all due to tree blockage. On 6 May I worked DL4DTU, IK2MMB, LA8LF, JA8IAD, DL1YMK, OK1KIR, JA6AHB, ON7UN, ES5PC, RW3BP for initial #236 - Sergei had an excellent signal for his small system, IK3COJ, PY5ZBU, SM3AKW, IZ1BPN #237 - (I was alerted to his presence by SM3AKW in the previous QSO), F6CGJ, NA4N, F2TU, K5JL, HB9SV, G4CCH, F6KHM, VE6TA, K4QL, WA6PY and OK1CA, and on 7 May, SM2CEW, OZ6OL, DL1YMK, OZ4MM, SM3LBN, G3LQR, LX1DB on SSB, K0YW, WW2R and N2UO. I also heard JA4BLC and IW2FZR.

**G4CCH:** Howard [howard@g4cch.com](mailto:howard@g4cch.com) has been busy over the last few weeks on 23 cm – I worked on 1 April – AW at 1240 SM5LE (O/O), 1326 LA9NEA (559/559), 1605 SM3LBN (559/559), 1900 OZ6OL (O/O) (-13 dB) on JT65c, 1919 VA7MM (O/O) (-13 dB) JT65c, and also heard W7UPF on CW, on 2 April – AW at 0810 VK4AFL (559/569), 0820 VK3UM (569/569), 0830 VK4TL (559/419), 0950 IW2FZR (569/569), 1003 IK2MMB (569/569), 1046 SM5LE (O/O) (-17 dB) on JT65c, 1210 heard LA8AV? responding to my CQ, 1427 LA9NEA (569/559), 1459 F1ANH (569/559), 1600 called LA8AV several times but nil response, 1837 VE7BBG (O/O) (-17 dB) on JT65c, 1950 OE5VRL (O/O) for initial #224 - Rudi has a 3 m dish and 100 W, on 3 April at 1824 LA8AV (549/549) #225 - Egil is new and has a 3m dish and 400 W, 2000 YU/DL3OCH (Serbia) (O/O) (-25 dB) on JT65c from KN04 for the 1<sup>st</sup> G to YU on 23 cm, on 4 April at 1826 HB9Q (O/O) (-7 dB) on JT65c and 2030 partial YU/DL3OCH (Serbia) (O/O) (-26 dB) on JT65c in KN02 - some confusion with modes and local problems at Bodo's end, on 5 April at 1128 VK4TL (549/449), 1139 VK4AFL (559/559), 1530 OH2DG (569/569), on 6 April at 1200 tested JT65c with VK4AFL - completed in 8 minutes (O/O) (-17 dB) with 50 W on both ends, 2130 partial Z3/DL3OCH (Macedonia) (-25 dB) on JT65b, but no copy at Bodo's end, 2245 Z3/DL3OCH (O/O) (-25 dB) in KN01 on JT65c –

tailed OE9ERC's sked for the 1<sup>st</sup> G to Z3 on 23 cm, on 8 April at 2032 LA9NEA (569/569), 2133 K5JL (589/579), 2256 KØYW, 2320 KI6DBR at OVRO (W6IFE) (39/559) - very loud but very distorted and 2346 K9SLQ (599/579), on 10 April 2300 ZA/DL3OCH (Albania) (O/O) (-26 dB) in JN91 on JT65b for 1<sup>st</sup> G to ZA, on 13 April at 2230 T9/DL3OCH (Bosnia) (O/O) (-26 dB) in JN92 on JT65b - despite low elevation and some tree blockage this was our easiest QSO for 1<sup>st</sup> G to T9, on 29 April - AW at 0530 VK7MO (O/O) (-18 dB) in QE37 - Rex has a 2.4 m dish and 100 W to Septum polarizer and had to "shoot" between the trees to make our QSO, 29 April AW 1417 SM5LE (O/O) (-16 dB) on JT65c, 1555 W7BBM (54/55) on SSB and 1714 VE6TA (569/569), on 3 May at 1926 RW3BP (559/559) and on 4 May at 1010 VK7MO (O/O) on CW and 1120 VK4AFL (559/559). I was active in the 23 cm leg of the DUBUS WW EME Contest and QSO'd on 6 May OH2DG, JA4BLC, IK3COJ, VK4AFL, ES5PC, DL4DTU, JA8IAD, SM3AKW, OZ6OL, DL1YMK, LA8LF, UT3LL, JA6AHB, OK1KIR, ON7UN, IK2MMB, F6CGJ, RW3BP, IZ1BPN #231, OK1CA, F2TU, N2UO, ES6RQ, PY5ZBU, HB9SV, K2UYH, IW2FZR, NA4N, W7UPF, WW2R, G3LTF, VE6TA, K5JL, OZ4MM, WA6PY, VA7MM, OK1DFC, K5PJR, F6KHM on SSB, K4QI, W9IIX and K7XQ, and on 7 May HB9BBD, VK4TL, HB9Q, G3LQR, SM2CEW, UT3LL (dup), LX1DB on SSB, G4DDK, SM3LBN, KØYW and K5SO. I ended with 52 QSOs x 31 sections for 161,200 points. Activity was good on Saturday, but a bit sparse on Sunday making it difficult to find new stations to work. Gotaways were F5HRY, JA4LJB, SM5LE, SP6JLW and UR5LX. Please E Mail me if you want a test or sked. I will be pleased to try either CW (preferred) or JT65.

**G4RGK:** Dave [g4rgk@btinternet.com](mailto:g4rgk@btinternet.com) did not put in a lot of moon time this past month - I missed the first session of the 70 cm AET on 21 May, but was on for the 0800-1000 session. The moon was in the trees, so signals were down. Please let W8TXT know that I copied him with great signal despite the trees. I called him many times between 0800 and 0900, but he never heard me. I guess there was a polarization issue at the time. He was peaking 559 - easy copy while he was echo testing and calling CQ.

**GM00NN:** Iain writes - I have had the 3 cm feed on my 2.4 m dish recently doing tests locally. Hence, I have not been QRV on 23 cm, between that and very poor WX here. I have some business commitments over the summer period, so I am unlikely to be on 23 cm during June, July or Aug. I will be here and available from Sept to Dec and will be QRV 23 cm EME again then. All the equipment is working and just needs the feed to be put back on the dish. I will look forward to working many in the autumn again with my 2.4 m, 0.37 f/d dish with Septum/choke ring feed, 230 W PA and 0.4 dB NF preamp.

**HB9BBD:** Dominique [dfaessler@bluewin.ch](mailto:dfaessler@bluewin.ch) was active on 1296 during the DUBUS EME Contest -- I spent 4 hours at my EME site only during the 6/7 May weekend. 29 random QSOs were made including 2 initials. The initial contacts were HB0FX (539/559) dxpedition #238 for a new DXCC on EME (now at 42) and VK4TL (549/569) #239. The weaker stations worked were SM5LE (529/569) and JA6AHB (549/599). My initial count of #239 is for CW/SSB only. I have withdrawn my listing at HB9Q because the counter is mixed with computer activities. Does someone maintain a CW only top list on 23 cm? [G4RGK has compiled a CW only list. HB9Q is making a distinction between mixed and only CW/SSB QSOs].

**IK2MMB:** Sergio [ik2mmb@email.it](mailto:ik2mmb@email.it) ended up with some 33 *relaxed* QSOs on 1296 during the DUBUS Contest weekend -- As far as I could see the participation from Europe was good, but a bit scarce from the rest of the world. Lots of people showed up briefly and suddenly disappeared. This behavior can be really frustrating for small guns and in general. On Saturday the condx were quite bad until the moon reached about 35° el in the east window, then ok, then bad again below 35° elevation on moonset. On Sunday condx were similar, but with up and downs in a more random manner. I was pleased to see that IZ1BPN made his first steps in 1296 EME. In Italy, we now have a small group on 1296. I also heard for the first time PY5ZBU and VK4TL unfortunately during bad condx, so no QSO this time.

**JA6AHB:** Toshio [ja6ahb@plala.to](mailto:ja6ahb@plala.to) sends info on his 432 CW Activity Event Time (AET) operation - I QSO'd on 21 May at 0210 VK4AFL (559/549) and 0244 VK3UM (559/559). [I know Toshio was also active on 1296 in the DUBUS contest. Hopefully he will send news of his other EME activity in the future].

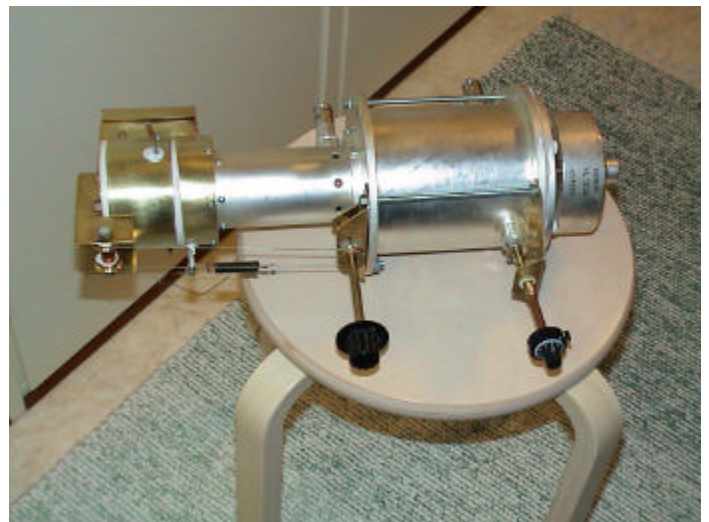
**K4OI:** Russ [K4OI@aol.com](mailto:K4OI@aol.com) was QRV during the DUBUS Contest by chance, but enjoyed the activity -- I got on 1296 the evening of 6/7 May and found activity very high for a near apogee moon. I wonder what the occasion was? Condx did not seem all that great, but I worked the following: HB9SV, K5JL, G3LTF, IW2FZR, IK3COJ, DL1YMK, F2TU, IK2MMB, F6KHM, OK1DFC, OK1KIR, VE6TA, ES5PC, NA4N, VA7MM, G4CCH, W9IIX, OZ4MM and WW2R. In all, 19 QSOs were made in less than two hours.

**K5SO:** Joe [k5so@valornet.com](mailto:k5so@valornet.com) has built a 70 cm feed for his dish and has it mounted and in receive only, no transmit yet. He is seeing about 14 dB of sun noise. Besides EME, Joe has successfully detected and recorded his first Pulsar at 327 MHz (where it is much quieter). Joe will be happy to e-mail to anyone interested a copy of his first recorded pulsar

**K7XQ:** Jeff [k7xq@secure.elite.net](mailto:k7xq@secure.elite.net) tried 2304 EME for the first time at the end of April -- I tested on 29 April with OZ4MM but had no copy either side, and on 30 April with OE9ERC (O/-) who had a nice solid signal but did not copy my < 50 W signal, and F2TU (O/-) who was a bit stronger. Both signals were very stable and had the same signal quality as on 1296 with not that much libration fading. I need to fix my 2 x 7289 amp. I need dielectric sheet material to separate the HV plate from the ground. The new WD5AGO Septum feed seems to work well. I am using a WD5AGO 1296 preamp for now. It may be a bit low on gain (15 dB) with only about 1.5 dB NF. I have ordered a new 2.3 GHz 180 W Spectrain PA, which should improve my signal level. On 23 cm I have my 350 W GS15B PA back up and running, and on 70 cm am still in the process of modifying my array for cross polarity.

**LA0BY:** Stefan [la0by@dar.de](mailto:la0by@dar.de) is a new station on 432 EME -- I am running a single 38 el yagi and a 120 W solid state PA including a mediocre preamp inside with 6 m of Aircom Plus cable between the PA and dipole. I was QRV on 21 May for about 3 hours. My first CW sked at 0600 with SM2CEW was easily completed with (O/M). Peter reported I was constantly audible and that he received my signal in vertical pol. Theoretically Peter should have received me at -3 dB, and I should have received him at -6 dB relative to noise floor. It seems our result was better than that. My second CW sked with DL9KR did not work out. I heard Jan but he was much weaker than SM2CEW. The problem was probably Faraday. I also had some rain during his sked. I also heard HB9Q on JT65B, but did not call him. No other stations heard despite the advertised DUBUS CW activity weekend. If somebody wants to try a sked with my small station, I can set up my antenna again at short notice. I need EL > 15 deg and AZ < 215 deg.

**OH2DG:** Eino [eme.oh2dg@dnainternet.net](mailto:eme.oh2dg@dnainternet.net) reports on his results for the EWW EME Contest on 7/8 May on 23 cm - I was running 400 W TX power to my 8 m dish with 3 dB of cable loss. Many pleasant and enjoyable QSOs were had. During Saturday, the conditions seemed really boor, but Sunday was much better. At low declination, the trees and my house do not allow a moon window to the NA so I QSO'd only Asian, Oceania and Eur stations. I made two initials - VK4AFL and RW3BP. Stations worked in the contest were HB9Q, VK4AFL for initial #151, HB9BBD, G4CCH, ES5PC, JA4BLC, SM3AKW, IK2MMB, OK1KIR, DL1YMK, F6CGJ, LA8LF, F6KHM, OZ6OL, ON7UN, F2TU, JA8IAD, OK1CA, OZ4MM, IK3COJ, RW3BP #152 and HB9SV for an overall score of 14 x 22. I was also QRV for Bodo's dxpedition to the Balkans and QSO'd ZA/DL3OCH to Albania - TNX Bodo. We used JT mode and signal strength was -27.



OH2DG's new 23 cm PA

**OK1KIR:** Vladimir, Tonda and Jan, from the OK1KIR team [ok1vao@quick.cz](mailto:ok1vao@quick.cz) give an update on recent activity -- We participated in the 10 GHz polarization test with IQ4DF. Recorded files are at [http://www.qsl.net/ok1vao/10GHz\\_pol\\_test](http://www.qsl.net/ok1vao/10GHz_pol_test). Before the 1296 part of EWW EME Contest, we QSO'd K5PJR for initial #204. Then in the contest we QSO'd on 6 May at 0004 K5JL (569/559), 0029 VE6TA (559/559), 0037 OZ6OL (559/559), 1218 HB9BBD (579/589), 1224

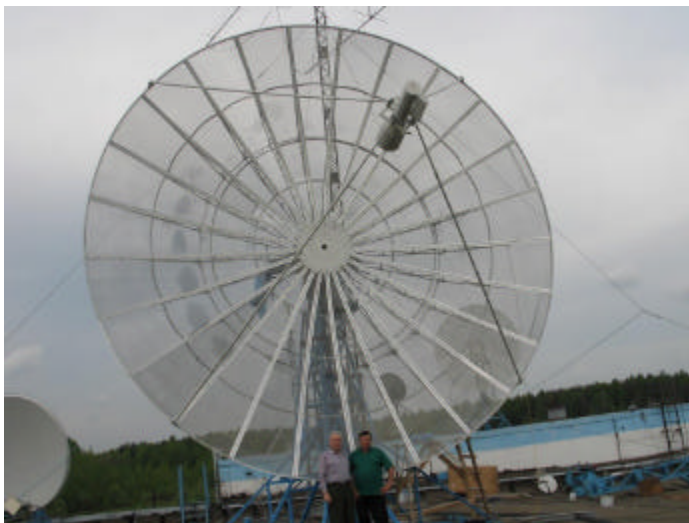


HB9Q (569/559), 1237 JA8IAD (549/449), 1255 JA4BLC (549/559), 1328 ES5PC (549/549), 1347 F6KHM (559/559), 1352 IK3COJ (539/539), 1405 IW2FZR (549/539), 1420 IK2MMB (549/559), 1525 G3LTF (559/559), 1530 ON7UN (559/559), 1537 LA8LF (549/559), 1547 F6CGJ (569/559), 1554 HB9SV (579/569), 1559 OH2DG (559/559), 1608 F2TU (569/559), 1620 G4CCH (569/569), 1628 SM3AKW (559/559), 1702 DL1YMK (549/549), 1755 RW3BP (549/559) #205, 2015 K2UYH (549/549), 2047 OK1CA (559/559), 2206 OK1DFC (559/559), 2228 OZ4MM (569/569), 2330 WA6PY (559/559), 2349 K4QI (559/559), and on 7 May at 0054 VA7MM (O/O) #206, 1332 JA6AHB (549/559), 1414 VK4AFL (539/529) #207, 1648 LX1DB (579/569), 1702 SM2CEW (559/559), 1815 G3LQR (549/549), 2050 N2UO (O/O) #208, 2112 PY5ZBU (O/O), 2125 SM3LBN (539/539) #209, 2200 K0YW (569/569), 2258 K5SO (569/559) #210 and 2312 NA4N (549/559) #211. We ran a TH308 PA at 350 Wout, FHX35LG on RX, 4.5 m solid dish with el - az mount and circular pol Septum feed with choke (gain 31.85 dBd) with cable loss of 1.7 dB. Conditions during the contest were moderate. The Eur VHF/UHF/SHF contest that was in parallel, brings some interference. We would prefer to have a different date selected. We also QSO'd VK3XPD (M/O) for initial #20 on 5760 on 23 May at 0223. This was the first VK-OK 6 cm QSO a world record of 15931 km (JN79dw - QF22nd).

**OK1TEH:** Matej [ok1teh@karneval.cz](mailto:ok1teh@karneval.cz) sends a correction to his report in the last NL – I made my 1st QSO with HB9Q on JT65 using only 50 W. All my following QSOs were with my tube PA at a max 500 W PEP on CW and 300 W on JT65b.

**OZ4MM:** Stig [vestergaard@os.dk](mailto:vestergaard@os.dk) reports of his 23 cm DUBUS Contest activity -- I only had time to be on 7 – 8 hours during the 1296 part of the contest. I missed many of the regular stations. On Sunday morning I found many very loud signals and quite good activity even with the low dec. I ended with 47 stations and 2 new initials. Stations was worked were: HB9Q, K5JL, F6KHM, OK1KIR, G4CCH, RW3BP, ON7UN, IK3COJ, W7UPF, IK2MMB, ES5PC, K2UYH, F2TU, NA4N, IW2FZR, WB2BYP for initial #256, VE6TA, IZ1BPN #257, VA7MM, DL1YMK, WW2R, K7XQ, K4QI, JA4LJB, SM3AKW, JA4BLC, ES6RQ, OH2DG, JA8IAD, JA6AHB, SM5LE, OK1CA, HB9BBD, OZ6OL, F6CGJ, UT3LL, LA8LF, VK4TL, HB9SV, UT3LL (dupe), G3LQR, SM2CEW, G4DDK, N2UO, SM3LBN, G3LTF, LX1DB and PY5ZBY. I find signals are stronger and stronger every year, but activity lower at the same time! Back after the 13 cm leg of the DUBUS contest, I worked on 13 cm on 29 April F2TU, and on 30 April JA8ERE for initial #57 and W9IIX #58. I am looking forward to attending the EME conference in Wurtzburg.

**RW1AW:** Alex [rw1aw@skylink.spb.ru](mailto:rw1aw@skylink.spb.ru) has a new HB 8 m dish f/d = 0.57 that he plans to use for 70 and 23 cm EME. His old 6 m dish will be QRV only for 13 and 6 cm bands. He also has new 23 and 70 cm PAs using a TH-347. In tests despite high winds, he worked in a short time 11 QSOs and two initials with OZ6OL (669/559), G3LTF (579/559), IW2FZR (579/559), DL0SHF (57/55), SM3AKW (579/569), ES6RQ (569/559), OK1CA (579/569), LA8LF (569/559), G4CCH (589/579), G4DDK (O/O) in sked and SM5LE (529/529).



**RW1AW's new 8 m dish for 70 and 23 cm**

**RW3BP:** Sergei [rw3bp@co.ru](mailto:rw3bp@co.ru) caused quite a stir when he showed up for the 23 cm leg of the DUBUS Contest -- I invited Dmitry, RA3AQ to operate the DUBUS Contest with me, so we were a multi-op QRP station. We completed 29 QSOs (one sked and one dupe) with a multiplier of 19. There were no problems

with TX side, but RX was poor. We had a fault that I found and fixed only after the contest. I think we lost about 2 dB of sun noise. Dmitry partially compensated for this problem as he is a very skilled CW operator. Anyway, there were only a few calling stations that QRZ from our side - my apologies. Otherwise the 2.4 m offset dish and W2IMU horn with 400 W at the feed (500 W water cooled GS34) worked well. I used my old W2IMU horn optimized for 0.55 F/D. It gives too wide an illumination for a 2.4 m offset dish with an F/D about 0.68. It provides close to max gain, but not max G/T. Max gain with no blockage by the feed does a good job for TX, but is not the best for RX. Fortunately the feed spillover is mainly directed to cold sky, which helped a bit.

**SM5LE:** Sven [sven.o.nordin@telia.com](mailto:sven.o.nordin@telia.com) was active in the DUBUS 23 cm contest and worked 6 CW QSOs, 3 of them were initials – I CWNRs were F6CGJ, HB9SV and LX1DB plus a lot of QRZs. There were no NA contacts due to the low dec. I have to do some pruning – HI.

**UA3ME:** Nik (UA3MBJ) is handling e-mail and skeds for UA3ME. UA3ME is a new 1296 EME station in KO97qv using a 1.2 m dish and 300 W from a GS34b PA. He only operates CW. I am not sure, if UA3ME has completed a QSO yet. [We had a partial QSO, and probably would have completed if we had a better moon window]. UA3MBJ is also operational on 23 cm EME from KO88sa. Nik has only a 40 el yagi and 22 W, but has copied on JT65c HB9Q (-20 dB), G4CCH (-26 dB), DJ9YW (-27 dB) and K2UYH. He is working on a GI21b final and hopes to have 150 W soon.

**VA7MM:** Mark [lunarlink@hotmail.com](mailto:lunarlink@hotmail.com) sends a report on his group's recent activity – Our station was active in the ARI's 1st Italian EME "New Modes" Contest in April on 1296. Contacts were completed with SM5LE, G4CCH, OZ6OL and VE7BBG. Just minutes before a sked with VK7MO, a cooling system failure took the station's RF power amplifier offline. We were down and out for the rest of the contest. A failed water pump was later replaced and the amplifier reinstated. In May, the station was active in the EWW EME Contest and contacts were completed with VE6TA, F6KHM, G4CCH, F2TU, K5JL, OZ4MM, K4QI, OK1CA, K2UYH and OZ6OL. Our next scheduled operation will be in the XIII Italian EME Contest in Sept. In the meantime, we are available for skeds. The VA7MM EME station is a team effort by myself (VE7CMK/VA7MM) and Toby (VE7CNF).

**VE6TA:** Grant's [ve6ta@telusplanet.net](mailto:ve6ta@telusplanet.net) 23 cm DUBUS results -- Despite a very poor window to Europe this weekend, I still managed to work 36 stations and 2 new initials on 23 cm. I found that outside of the main window on Saturday, the west coast had a total of 2 hours of common moon window to the east Friday and Sunday. I guess we need more stations in NA and Asia to help pass the quiet time - HI. The following stations were worked: OZ6OL, OK1KIR, NA4N, WW2R, K5JL, VA7MM, K2UYH, JA8IAD, JA6AHB, VK4AFL, F6KHM, HB9Q, SM3AKW, ON7UN, F6CGJ, G4CCH, DL1YMK, WA6PY, IK3COJ, OK1CA, G3LTF, HB9SV, F2TU, OE9ERC, ES5PC, IK2MMB, RW3BP for an initial (#), OK1DFC, OZ4MM, K4QI, N2UO, W9IIX, K7XQ, JR4ZZS, VK4TL (#) and IW2FZR. Conditions seemed a bit variable at low elevations, and very good at high elevations. My apologies to JA8IAD and N2UO for far too many QRZs when they called due to libration.

**VK7MO:** Rex [rmoncur@bigpond.net.au](mailto:rmoncur@bigpond.net.au) tried a number of CW skeds in May on 1296 with his small station -- I am not having a lot much success with CW and I think it is not only my lack of CW ability, but it could be that I am not RXing as well as I should. Another problem I have is that my callsign seems to confuse people that I am sending reports and I have now had three stations think they completed with me and I have still not copied their callsign. The problem with M 0 and 7 in one's callsign is that people hear M and O and think they have a report and then when they hear 7 they think they are complete.

**W9IIX:** Doug's [iix1@comcast.net](mailto:iix1@comcast.net) May 13 cm EME report -- My first 2304 contacts were made in the DUBUS 13 cm contest. I worked F2TU and Sk0UX, and heard OK1KIR, OH2DG and OE9ERC. A few days later, I worked W5LUA on random, while troubleshooting the equipment. A second power supply was added to get the Spectrian PA up to snuff on power. Schedules are not possible now as I am extremely busy with the business and am set back up on 23 cm because of DUBUS Contest and CT3/DL1YMK activity in May/June.

**WA6PY:** Paul [pchominski@jaalaa.com](mailto:pchominski@jaalaa.com) EWW/DUBUS 23 cm report -- I was able to be QRV for only 2 hours on 1296 on 6 May. I QSO'd K5JL, VE6TA, G4CCH, F6KHM, F6CGJ, F2TU, RW3BP (O/O) in sked, G3LTF, OK1KIR, DL1YMK, OK1CA and ES5PC. Heard were IK2MMB and OZ4MM. Unfortunately, I was not able to stay longer on the band.

**WW2R:** Dave's [ww2r\\_eme@g4fre.com](mailto:ww2r_eme@g4fre.com) May NL report -- At the start of month, I checked out my 296 preamp/relay configuration. Improvements have dropped my system NF by 0.3 dB. Now echoes are audible all the time. In the 23 cm leg

of the DUBUS contest I worked K5JL, VE6TA, K2UYH, HB9Q for initial #24, F2TU, G4CCH, F6HKM (answered my CQ), OZ4MM, OK1DFC #25, K4QI, JR4ZZS #26, G3LTF (answered CQ), OZ6OL (answered CQ), IW2FZR #27 and ES5PC #28. CWNR were HB9SV, ON7UN, OK1KIR, F6CGJ, JA8IAD, JA6ABH and VA7MM. HB9SV had the loudest signal on the band, but hard to track down. ON7UN was second loudest. I called for 30 minutes, but no response to me or other bigger stations calling him. Also heard were W9IIX, NA4N VK4AFL and N2UO. I realize that more power is needed during contest weekends to get attention of the bigger stations. Please note my new EME email address and that the [ww2r/g4fre](http://ww2r/g4fre) website has already moved to [www.g4fre.com](http://www.g4fre.com)

**ZS6WB:** Hal [zs6wb@telkomsa.net](mailto:zs6wb@telkomsa.net) is keeping the NL informed on efforts to get some African dxpedition activity on 70 cm. There is a good possibility that Hannes, ZS6JDE will be going to Mozambique and Malawi (7Q7JE) at the end of June, and if everything comes together could bring gear (2 yagis and a 185 W PA) for 432 EME on this trip. He will also be very likely going back to 9J before the end of the year.

**K2UYH:** I had a good time during the DUBUS 1296 contest on Saturday and added one initial with IZ1BPN, but because of a family event could not be QRV on Sunday. I QSO'd on 6 May at 0410 VE6TA (559/559), 0418 WW2R (449/559), 0420 partial VA7MM (O/O), 0432 partial VK7MO (O/?), 0510 JA6AHB (O/559) – totally in the trees, 2003 HB9Q (559/569), 2010 G4CCH (559/579), 2015 OK1KIR (449/549), 2057 ES5PC (559/569), 2108 SM3AKW (559/579), 2114 F6KHM (579/579), 2127 N2UO (449/559), 2133 IW2FZR (559/569), 2143 RW3BP (559/559), 2153 NA4N (559/559), 2157 HB9SV (579/579), 2205 ON7UN (579/579), 2217 OK1CA (559/579), 2235 K5JL (579/569), 2240 F2TU (569/569), 2249 IZ1DPN (449/559) for mixed initial #267\*, 2305 DL1YMK (559/559), 2311 OZ4MM (579/579), 2337 IK2MMB (559/569) and 2347 W7UPF (559/559), and on 7 May 0002 K7XQ (449/569), 0505 VA7MM (449/559) and 0528 JA8IAD (549/559) for a total of 26x209. I was on 70 cm briefly on 7 May and after more than a month of trying finally QSO'd Dave, 9H1TX on JT65C. Dave has corrected his drift problem and we easily made it with signal level reports (-23 dB/-23 dB) exchanged both ways. This is my first Malta on 70 cm and brings me to #721\* and mixed DXCC of 85\* -- although I am told that I may have more because some of the countries that I worked in the past, but which have now split up also count as new for DXCC. On 21 May on 1296 I had a partial 0900 UA3ME (M/O?) – we lost moon window before the QSO could be completed, and on 2 June I worked at 2315 CT3/DL1YMK (559/559) on CW #268\* and mixed DXCC 55.

**VP9/K2UYH:** I also attempted another dxpedition to Bermuda. When I learned that I would be going to Bermuda again, I tried to contact VP9UM, who had hosted my previous 432 EME attempt 2 years ago. Unfortunately I was unable to contact Paul or anyone else on the island that was interested in EME. In addition the weekend of the trip, had a very poor moon window with the moon very close to the sun. The small separation did not leave much chance of success with a single yagi on 432. 1296 with its narrower beamwidths offered a little more operating time. At the last minute decided to give 1296 a try. I knew it would be a long shot as I was breaking two of my key EME dxpedition rules. 1) Always have local assistance - I would be alone on the island with no chance of help if I forgot or had something breakdown; and 2) always plan and announce an EME dxpedition well in advance. As a result of previous travel experiences, I decided to use a conventional 7' diameter stress dish, rather than the 7' offset stress dish I experimented with a couple of years ago. The conventional dish allowed me to pack the dish in a box only 42" x 6" x 6" (about half the length of the offset dish) and made bore sighting the dish easier. With the close sun and moon, seeing the moon was impossible. I used the reflection of the sun on the dish to calibrate my tracking system. To keep the size of the feed antenna down, I used quad dipole feed with a hybrid to generate circular polarization – this turned out to be my Achilles' heal. The rest of the system consisted of a TS2000X, Down East Microwave (DEM) 150 W SSPA, a low noise preamp and switching power supply. (N2CEI of DEM was kind enough to lend me the PA, which was one of their demo units. Steve's generosity really made the dxpedition possible). I arrived on Thursday and discovered my hotel room was not where I had expected. I had planned to operate from the balcony of my hotel room. They had a railing I could attach the dish mount to and a table for the equipment. Unfortunately my room was facing due west not south as I had requested. I was told they were totally booked and a south facing room was just not available. I was able locate a place away from the hotel where I could get power and setup the dish. The only problem was that had connect and reconnect my equipment each day. I felt the dish and feed could be left out and did not have problem. I completed the assembly of the dish the first day. Because of my schedule I was only available in the afternoon, which limited my setup time. On Friday I added the feed, but loss my balance and damaged the dish. I was able to make repairs, but lost time and did not have everything connected until after the European moon window and when the moon was too close to the sun. I did

verify that I was receiving sun noise. On Saturday the sun and moon were synced and operation was not possible. The only thing I did was change the connections to hybrid. I thought I had set the polarization wrong and changed the connections based on new information I had received via e-mail. As it turned out this was a mistake. Only one day remained for operation, Sunday as I was leaving on Monday. On Sun day I was able to start a little before noon, but heard no signals. I ran several skeds with nil results. I thought I might be having a tracing problem and play with the position of the dish. Then strong pulse noise, possibly from radar, showed up and put me out of business. After about two hours the noise disappeared, and I able to resumed EME operation, but still no signal. When I could not hear HB9Q on JT65C, I finally decided to try switching polarization. It took longer then I expected to make the change and missed the end of Dan's sked. I telephoned N2UO to tell him not to bother to go to my QTH to try and work me as the system was not working. I also told him to e-mail everyone I had skeds with and tell them I would try calling CQ with the reversed polarization setting on JT65c. I did not expect success. To my surprise I almost immediately copied G4CCH calling me (-21 dB) and worked Howard as quickly as possible. I then copied OE9ERC calling, but Erich never sent reports – I noted that the moon was at 2 degrees at his QTH. I phoned Marc to ask him to go to my QTH and give me at try. Unfortunately by the time he arrived, the moon was going behind a wall. I copied Marc sending to me, but he never detected my signals. I guess I will have to try again.



**VP9/K2UYH with 7' stress dish and quad dipole circular feed**

**NETNEWS BY G4RGK: W7OX** is working on lots of projects with K7NII. **K7NII** is working on EME with 17' dish for 23 cm and 3 cm. Jerry hopes to be on by end of summer. **W7MEM** is QRV on 70 cm EME with about 800 W. **VK3UM** was active on 2 June and called for two hours on both 70 and 23 cm in the NA window, but only found W8TXT present on 432. **KM5A** has a new e-mail address [weaton.steve@gmail.com](mailto:weaton.steve@gmail.com). **WA5WCP** worked W7BBM on 23 cm random for a new one on 14 May. Paul now has 63 contacts and 32 initials. **KSPJR** after 45 min of trying completed with DJ9YW after moon was above 30 deg el. **N8CO** reports that all his septum feeds were sold at the SEVHF conference. He is look for a dish and help with a TWTA. **N7AM** fell and broke pelvic bone, but is doing well and healing up. **SM2CEW** worked LA0BY on 70 cm EME CW – see LA0BY's report. **KL6M** is QRV again on 23 cm about 200 W and in May worked 6 stations and heard more. **W8TXT** was active during the May 70 cm AET calling CQ and echo testing, but only heard a "9". **W2UHI** reports his 23 cm system is still working and that he is looking forward to being active again. **KSJL** had a tower disaster on 6 and 2 m, but his EME equipment is all ok.

**FOR SALE: NP4B/VE3** has a 15' dish to give to anyone interested in putting it on EME. Bob [zimmo2@juno.com](mailto:zimmo2@juno.com) is located in the Niagrafalls area of Ont. **WA5WCP** is looking for protection circuits for GS-15 PA.

**FINAL:** My Bermuda dxpedition effort has caused this newsletter to fall behind schedule. I will try to get thing back in phase for the July activity weekend (AW) and 70 cm AET on 15/16 July.

? Please don't forget to submit your DUBUS CW Activity Contest Logs to send [dubus-aw-logs@sm2cew.com](mailto:dubus-aw-logs@sm2cew.com)

? Time is running out to make your plans for EME2006 in Wuerzburg, Germany <http://www.eme2006.com/>. The attendance at this year's conference appears to be setting a new record - see you in Wuerzburg!

? This has been a great year EME activity wise. Let's keep the activity going over the summer. See you off the moon! 73, AI – K2UYH