

## 432 AND ABOVE EME NEWS MARCH 2008 VOL 36 #4

EDITOR: AL KATZ, K2UYH; DEPT. ELECTRICAL/COMPUTER ENGINEERING, THE COLLEGE OF NEW JERSEY, PO BOX 7718 EWING, NJ 08628, TEL (W 609-584-8424) OR (H 609-443-3184), FAX (609-631-0177), E-MAIL [a.katz@iecc.org](mailto:a.katz@iecc.org)  
PROD/MAIL: TOM KIRK, KA2VAD (609-584/8424), E-MAIL [kirk@lintech.com](mailto:kirk@lintech.com)  
NETNEWS EDITOR: G4RGK, DAVID DIBLEY, E-MAIL [g4rgk@btinternet.com](mailto:g4rgk@btinternet.com) (based on K1RQG's Netnotes, Reflector News and CW lists)  
EME NETS: 14.345, 10 AM ET SATURDAY AND SUNDAY (AFTER VARO NET ENDS ON SUNDAY)  
NET CONTROL AND SKEDS COORDINATOR: JOE, K1RQG, TEL (207-469-3492), E-MAIL [k1rqg@aol.com](mailto:k1rqg@aol.com)  
EME DIRECTORY: <http://www.dl4eby.de/>, DL4EBY/DK0TU, KLAUS TIEDEMANN, TEL (49-30-7955467), E-MAIL: [tklaus@snafu.de](mailto:tklaus@snafu.de)  
NL EMAIL DISTRIBUTION and EMAIL LIST CORD: WARREN, W2WD [wbutler@iecc.org](mailto:wbutler@iecc.org) [TXT OR PDF OR "ON WEB" NOTICE]  
THE NL WEB VERSION IS PRODUCED BY W6/PA0ZN AND AVAILABLE AT <http://www.nitehawk.com/rasmit/em70cm.html>

**SAD NEWS:** I am very sorry to report W7GBI's passing. W7GBI was one of the pioneers of 432 and up EME. He was active on 70, 23, 13 and 6 cm EME. Having reached the age of 90, he had slowed a bit in recent years but was still striving to improve his station and planned to be QRV on 3 cm EME. Most importantly he was a friend to all of us. We will dearly miss Charlie.



Charlie, W7GBI now a SK

**CONDITIONS:** Off the moon Feb was another exceptional month. The 70 cm CW Activity Time Period (ATP) organized by DUBUS yielded some of the best 432 activity in years. Comments "like the good old days" and "70 cm activity is back" were heard. The EME SSB Contest on 1296 also attracted an excellent turnout and was certainly one of the best in several years. The DUBUS Digital Contest did not do as well on 432 and up although there was some activity on both 432 and 1296, particularly during the Eur moon window. There was also a flurry of 24 GHz EME activity this month. Congratulations to W5LUA, VE4MA and all the new successful 1.25 cm EMEers. The T19KK dxpedition was a bust and did not produce any QSOs – see their report. The focus in March will be the DUBUS 70 and 6 cm up EME Contest on 15/16 March.

**SSB EME CONTEST HIGH SCORES:** I am not sure all reports are in but it appears that the chief fun maker may be in North America this year. K1RQG is in the lead with 38 SSB and 2 SSB/CW QSOs in 18 sectors for 1,404 points. OK1DFC is a very close second with 40 SSB QSOs in 15 sectors. I [K2UYH] am a weak third with 26 SSB QSOs and 1 SSB/CW QSO in 15 sectors for 795 points. But there are other big stations that have not been heard from.



K1RQG's new 10 m dish

**DXPEDITION NEWS FROM DL3OCH:** Bodo [dl3och@gmx.de](mailto:dl3och@gmx.de) is planning some 23 cm dxpedition activities in March -- DJ9YW has fixed my transverter, so I can be QRV again – txn Henrich. I will be active on 14 March from 2000 to 2200 as HA/DL3OCH in JN87pu, on 15 March 1300 to 1400 as HA/DL3OCH in JN86st, and on 22 March 0100 to 0200 as 3A/DL3OCH in JN33rr. At all locations I will operate on 1296.090 on JT65C and will always TX first. The Monaco location will be the most challenging. Everybody who has been in Monaco knows that it is difficult to activate on EME. I have made only two QSOs from there in the past (DJ9YW and OE9ERC). I will operate as before from the harbour in Monte Carlo. I want to set up everything, work everybody and take the antenna down. I hope that I do not get interrupted from the police or anybody else as in the past. If the weather does not allow operating on 22 March, I will operate on the 23<sup>rd</sup> and will try to stay longer if necessary, but I cannot stay all night. I am the QSL manager for OA4BHY. Cards are printed and waiting. I would be happy to receive your QSL cards. All QSL cards are appreciated. If someone is still missing QSL cards from my previous activities, I am answering each incoming QSL.

**AL7RT:** Ray [k5wxn@aol.com](mailto:k5wxn@aol.com) was QRV during the 1296 SSB Contest -- I worked K2UYH on CW/SSB and VE6TA on CW. I also heard K1RQG work WA5WCP. I sent a QSL to K2UYH's home address and it was returned undeliverable and need a good address. [My town's zip code was changed several year ago. The new town and zip code is West Windsor 08550. Everything else is the same].

**DL1YMK:** Michael [DL1YMK@aol.com](mailto:DL1YMK@aol.com) reports that preparation for the CX dxpedition are progressing well. He has new aluminum cases for transportation. He was on 23 cm during the Feb AW and worked OK1DFC and a couple of others on SSB. He also QSO'd SV1BTR for a new one.

**DL4MEA:** Gunter [guenter.koellner@nsn.com](mailto:guenter.koellner@nsn.com) reports working SM3AKW and WD5AGO on 13 cm crossband on Friday night of the 16/17 Feb AW -- During the 23 cm SSB Event I caught on SSB SP6JLW, VK3UM, LX1DB, IW2FZR and ON4BCB. Then I had to do some house construction work and returned some hours later to add G4CCH, IK3COJ, K1RQG, IZ1BPN, K2UYH, K9SLQ, K5JL, OZ6OL, IK1DFC, ON7UN, SV1OE on SSB/CW and an initial (#) and VE6TA. I was then too tired to continue and I fell into bed. My TH347 Plisch PA did some strange things in the cathode circuit, so my signal might have been at times weaker than expected. Thanks to all for the contacts.

**DL7APV:** Bernd [dl7apv@t-online.de](mailto:dl7apv@t-online.de) had "big fun" on 432 during the Feb ATP -- I was only on for the 2nd part, but after 2 CQs had a pile up and was more busy than in the ARRL contest. I worked KL6M, G3LTF, SP7DCS for an initial (#), DF3RU, VK4AFL, RW3PX, 11NDP, SV3AAF, SM3BYA, SM3JQU, DG1KJG, IK2RTI (#), UA6LGH and DK8VS. I hope I caught all who called as most of the time there were more than 2 stations calling at same time. Signals were excellent with deep QSB. Having the 70 cm ATPs at perigee seems a good idea. I will take down my 8 yagi 432 array after the 70 cm DUBUS Contest in March. I will then replace my present tower and rotator and improve the antenna system. I plan to be back on in time for the CX dxpedition. I am sure if I will use the same yagis again, so if someone is interested my 8 x 13 w1 9BV array (including feedlines) please contact me.

**F2TU:** Philippe [f2tu.philippe@orange.fr](mailto:f2tu.philippe@orange.fr) was unable to be QRV for the SSB Contest, but was active the weekend before (9/10 Feb) for few hours on 13 and 23 cm -- On 23 cm I completed my first QSO with VK4AFL (559/569) for my initial #70. We also tried SSB with out success as 1/4 of the dish behind a tree and gave 2.5 dB of noise. On 23 cm I worked VK3UM, OK1DFC, DK3LJ (SSB), K9SLQ (SSB), LA9NEA, OZ4MM, IK2FZR, NA4N and G3LTF (SSB). I gave a long QRZ to a station that called me with much QSB. When I finally realized it was VE3KRP, it is too late! His calls were too short and the words not separated enough for the weak signal. [Philippe reminds new comers of [http://www.nitehawk.com/rasmit/e3sek\\_op\\_proc.pdf](http://www.nitehawk.com/rasmit/e3sek_op_proc.pdf)].

**G3LTF:** Peter [pkb100@btinternet.com](mailto:pkb100@btinternet.com) reports on his first EME outing of 2008 -- On 10 Feb on 1296 I worked VK3UM, LA9NEA, OZ4MM, OK1DFC, G4DZU and F2TU. F2TU was also worked on SSB. This QSO was to make sure that all worked well ahead of the SSB Contest. On 16 Feb I was able to be QRV for quite a good part of my moon pass (although I did miss 4 hours at the start of the US window). There was certainly a lot of activity and some great signals. I worked 21 stations on 2 way SSB: ON7UN, VK3UM, ON4BCB, OK1DFC, OZ4MM, IW2FZR, LA9NEA, G4CCH, SP6JLW, DL1YMK, IZ1BPN, SM3AKW, VE6TA, K2UYH, K1RQG, LX1DB, K5JL, W7BBM, WA6PY, K4QI, OZ6OL and VA7MM (CW/SSB). I heard IK3COJ, DL4MEA and N2IQ with workable signals and could just copy NA4N. I also heard VE4SA very weak, while he was working K1RQG. It was nice to hear the voices of so many old friends. On CW I worked SV1BTR and LA5ZK for initial #273. The next day, 17 Feb, I was on for the 432 CW ATP. Conditions were dominated by very deep slow QSB, which made some QSOs very hard. I worked PA3CSG, SM3BYA, KL6M, I1NDP, SM2CEW, DL7APV, RW3PX, DF3RU, UA6LGH, VK4AFL, IK6EIW (not heard for many years!), OK3RM, DG1KJG for initial #408 and after the end of the period SP7DCS #408. I heard also SV3AAF, IK2RTI, DL5FN and SM3JQU. Two hours was too short to work everyone who was on. On 19 Feb I ran a sked with OK1TEH, a single yagi station. He heard me at (M) copy and I copied him at (T), but I screwed up on the QRG so we didn't make a QSO. I am hopeful that we can next month. At the end of this sked I worked I1NDP with excellent signals. I'm still working on the 6 cm system and have feed improvements planned for 13 and 9 cm.

**HB9BBD:** Dominique [dfaessler@bluewin.ch](mailto:dfaessler@bluewin.ch) was a for the 1296 SSB EME Contest for a short time -- I made 10 SSB QSOs on 1296 in 90 minutes on Saturday. Signals were excellent and all random of course. [He was also QRV on 23 cm on Sunday after the end of the SSB Contest].

**I1NDP:** Nando [nando.pellegrini@tiscali.it](mailto:nando.pellegrini@tiscali.it) sends a brief report on his 432 CW activity during the 16/17 Feb AW including the ATP. I worked DF3RU, RW3PX, UA6LGH, JA6AHB, NC1I, G4RGK, G4ALH, WE2Y, KL6M, SP6JLW, SM3BYA, OZ6OL, SV3AAF, OZ4MM, SP7DCS, G3LTF, PA3CSG, DL7APV, SM3JQF, IK2RTI, F3VS and DK8VS. I was not able to copy a few calling stations as I was plagued by a local noise (unknown source) for a few hours. My apologies to the stations missed.

**IZ1BPN:** Stefano [iz1bpn@qsl.net](mailto:iz1bpn@qsl.net) operated the SSB Contest with IK1MTZ and IK1YWB from JN34ot. They QSO'd at 1458 OK1DFC (55/55) JO, 1540 DK7LJ (54/57) JO, 1558 ON7UN (55/56) JO, 1711 G3LTF (54/55) IO, 1716 IW2FZR (54/54) JN, 1751 SP6JLW (44/43) JO, 1754 HB9BBD (57/55) JN, 1810 IK3COJ (44/44) JN, 1946 G4CCH (55/55) IO, 1950 ON4BCB (53/44) JO, 2006 K1RQG (56/55) FN, 2030 DL4MEA (53/53) JN, 2056 K2UYH (55/55) FN, 2114 K5JL (57/57) EM, 2220 LX1DB (58/56) JN, 2221 K9SLQ (55/55) EN, 2300 K4QI (55/54) FM, 2335 VE6TA (55/55) DO, 0041 WA6PY (44/44) DM and 0046 DF3RU (54/54) JN. The station consisted of 8 m 0.4 F/D dish with VE4MA feed with choke ring, F1EHN tracking software and h.m. PWM DC motor control, TH308 PA, 0.3 dB NF LNA + DB6NT XVTR, TS850S and SDR I/Q receiver. The final score was (20x9)x2 for 360 points.

**JH1KRC:** Mike [jh1krc@syd.odn.ne.jp](mailto:jh1krc@syd.odn.ne.jp) reports a very enjoyable weekend on both CW and SSB -- I copied on 16 Feb LX1DB with a booming signal on SSB but we made no QSO because I could not get through the pile up -- sorry. DK7LJ also had a booming SSB signal and we QSO'd for initial #61 and ON7UN with a good SSB signal. On 17 Feb I added K1RQG #62 on SSB/CW, K2UYH on SSB with a nice signals, and VK3UM on SSB after our CW contact for #63 - wow! Doug's signal seemed to have slow and deep QSB. My antenna could not track the moon over 42 degs elevation at so high a declination. In northern and western Japan, it was stormy weekend and stations apparently could not be QRV. I didn't hear any other JA's. On CW I also worked LA9NEA, SV1BTR, OK1DFC, SM3AKW, OZ4MM and VE6TA, and heard on SSB OZ4MM.

**K1RQG:** Joe [k1rqg@aol.com](mailto:k1rqg@aol.com) had a great time in the 1296 SSB Contest. He worked at 1856 OK1DFC (57/57) JN, 1908 HB9BBD (58/59) JN, 1910 ON7UN (58/58) JO, 1912 SV1OE (55/55) KM, 1915 SP6JLW (56/56) JO, 1932 G4RGK (55/54) IO CW/SSB, 1939 K9SLQ (58/57) EN, 1944 ON4KCB (43/55) JO, 1947 RW3BP (56/57) KO, 1950 G4CCH (57/57) IO, 1954 IK3COJ (56/57) JN, 2005 IZ1BPN (56/55) JN, 2025 DL4MEA (57/54) JN, 2035 OZ6OL (56/56) JO, 2037 SM2CEW (56/57) KP, 2042 K2UYH (57/56) FN, 2054 DK7LJ (59/59) JO, 2058 K5JL (59/59) EM, 2113 K5GW (59/56) EM, 2127 VE3KCR (43/55) EN, 2130 VE6TA (57/57) DO, 2157 SM3AKW (55/55) JP, 2202 IW2FZR (55/56) JN, 2204 W7BBM (57/55) DM, 2207 N2UO (54/56) FM, 2218 ES90E (44/55) KO, 2228 LX1DB (59/58) JN, 2238 SV1BTR (57/56) KM, 2302 N2IQ (56/56) FN, 2310 WA6PY (55/55) DM, 2313 G3LTF (57/57) IO, 2318 VA7MM (54/55) CN, 2327 K4QI (56/56) FM, 2354 NA4N (54/56) FM, 2356 VE4SA (44/55) EO, 0042 DF3RU (57/55) JN, 0324 WA5WCP (55/57) EM, 0527

AL7RT (54/55) BP, 0622 JH1KRC (579/56) QM CW/SSB, 0711 VK3UM (57/55) QF for a total score of (38x2 + 2) X 18 = 1,404 points.

**K4QI:** Russ writes on his 1296 activity during the SSB Contest -- I got on for the 1296 SSB Contest, but found activity level to be very low. I worked SSB to SSB K9SLQ, LX1DB, OK1DFC, IZ1BPN, K2UYH, K1RQG, G3LTF, VE6TA and G4CCH for 9 QSOs in 5 fields. Worked CW-CW SV1BTR and VA7MM. I did not hang around for the JA window.

**KL6M:** Mike [melum@alaska.net](mailto:melum@alaska.net) was on for the Feb 70 cm APT -- It was windy here, but I braved it and all went well. I had a GREAT time and worked 23 stations including 3 initials! Great signals too. I gave KA7V his first EME QSO and my first Oregon on 432! He is using 4 yagis and 1.5 kW and is open for skeds at [barrywright@sbcglobal.net](mailto:barrywright@sbcglobal.net). QSO'd were KA7V (539/449) for #190, I1NBP (559/559), SM2CEW (579/579), SP6JLW (559/559), SM3BYA (549/559), DL9JY (559/559), G4RGK (559/569), RW3PX (549/459), W8TXT (549/559), OZ6OL (549/559), SP7DCS (439/559), SV3AAF (549/559), NC1I (579/569), G3LTF (569/569), DF3RU (569/579), PA3CSG (569/559), DL7APV (569/569), SM2CEW (569/569), DG1KJG (539/559), IK2RTI (549/569) #191, OK3RM (549/559), DK8VS (549/549), UA6LGH(549/569) and IK6EIW (O/O) #192. Congrats to I1NDP; what a fantastic signal. He was the beacon this weekend. When we worked I was in the trees. Later he was pushing S7. Sorry I missed 23 cm SSB, but I still way behind on my 23 cm amplifier work and position system improvements.

**LA9NEA:** Viggo [la9nea@online.no](mailto:la9nea@online.no) writes -- Here is my 23 cm activity report for the weekend of 16/17 Feb. I only operated a short time operation. On Saturday I worked the following fine EME stations: SV1BTR (559/549), SM5LE (539/O), JH1KRC (569/549), OK1DFC (55/55) on SSB, G3LTF (54/54) on SSB, DK7LJ (56/56) on SSB, SM3AKW (569/569), G4RGK (539/549) and SP6LJW (569/559) -- QRT'd at 1630. On Sunday I added IK3COJ (559/559), VK4AFL (559/559) and SM5LE (549/549) - QRT at 1630 again. There were particularly fine condx and lots of activity on Saturday.

**NC1I:** Frank [eme@nc1i.com](mailto:eme@nc1i.com) writes -- My station is operational again and appears to be working well. I was able to be on for the 432 ATP and found very good activity. I got on about 2 hours early and worked 4-5 stations before the start of the ATP. The new Green Heron Engineering controllers held the array right on the moon without any problems. We had clear skies the last couple of days and we were able to visually confirm that the tracking was staying right on the moon from just after moonrise to about two hours before moonset. It sure seemed strange to be able to just sit back and concentrate on the operating rather than watching the readouts and updating the antenna position all the time. I thought conditions were good, but not outstanding. Activity was excellent. The following stations were worked 16 Feb at 2039 W8TXT (539/579), 2054 I1NDP (569/569), 2110 RW3PX (55/559), 2135 IK2RIT (549/559), 2152 WE2Y (439/559) - he was sending much to fast and his dits were just disappearing making him almost impossible to copy despite having a respectable signal, 2200 SM3BYA (559/579), 2209 DL9JY (559/559), 2217 SP6JLW (569/579), 2223 G4RGK (569/579), 2230 OK3RM (549/569), 2238 G4ALH (559/559), 2253 DL5FN (569/569), 2259 SV3AAF (539/559), OZ6OL (559/559), 2338 SP7DCS (339/579) - Chris had a great signal and 2353 K7XQ (559/539), and 17 Feb at 0007 KL6M (569/579) - I don't think I had the receive polarity correct. Between 2230 and 2300 I heard many stations calling but unfortunately they had all zero beat there echoes right on mine and they were all about the same signal level making it nearly impossible to pull the calls out. I probably missed at least 3-4 stations because of this. We also had HF activities in the shack during this time that were distracting me and causing my keyer to shut down as RF was somehow getting into it - sorry to those I missed. Europe remained vertical for transmit and receive for the entire time, making it very easy for me. I hope to increase my polarity speed in the next month or so. My station was also active the previous weekend for the DUBUS JT65 Contest. Our results were not good, but we may have been trying to do too many new things at once. First we were using the new control system and we were auto tracking for the first time and had some more work to do to get it where we wanted it. This certainly kept us distracted at times. We were also using WSJT for the first time (other than one quick receive test nearly two years ago). It took some time to understand what we were doing and we still have a lot to learn. We know we missed some stations that were calling and we probably transmitted right over a few (sorry). We got on around 1500 on 9 Feb and only worked 6 stations in the first 2 hours. Things got worse from there and we only added two more over the next 8 hours despite our continuous operation. Two more were added on Sunday for a total of 10. At around 2200 on 9 Feb we discovered that our azimuth calibration was off by 3 degs. We are not sure when or how this occurred but suspect it had been that way for many hours, perhaps even the entire time. K2UYH was copied at -5 at 1535, so I would think we were fairly close at that time but I'm not sure. We checked our CW echoes several times during the day and they were never good. I would say that they never got to



within 10 dB of what I am accustomed. At this point that's all I have to go on since I have no earlier comparison on JT65. CW echoes were much stronger on 10 Feb. The strongest signal heard all weekend was OH2PO at -02. K2UYH peaked at -05. We did make some crude sun noise measurements on 10 Feb and we may be down a couple dB on receive. The JT65 operation is Bob's (W1QA) project. I will stick with the CW, but Bob will come over from time to time and operate digital. Any requests to work NC1I on JT65 will be passed on to W1QA and he will do his best to accommodate them. Due to travel plans I will not be able to activate my station again until March. We plan a full effort then for the DUBUS Contest.

**OK1CA:** Franta [strijavka@upcmail.cz](mailto:strijavka@upcmail.cz) reports on his Feb moon activity -- I was active during digital part of the DUBUS EME Contest and I made my first JT contacts on 23 cm. I worked RD3DA, G4CCH (7DB), LA2Z, PA3FXB, IW2FZR, OK1DFC, SM5LE and K2UYH (4DB) - the best signal. Thanks you all for your patience. I had a problem with the thermal stability of my TRX. I work on my OCXO to correct it for future activity. I also have new e-mail address [see above].

**OK1DFC:** Zdenek [ok1dfc@seznam.cz](mailto:ok1dfc@seznam.cz) had a fun time in the 1296 EME SSB Contest -- I worked at 1407 LX1DB JN, 1407 VK3UM QF, 1419 OZ4MM JO, 1422 G4CCH IO, 1552 SV1BTR KM, 1552 JH1KRC QM, 1734 ES90E KO, 2009 K1RQG FN, 2009 K9SLQ EN, 2020 K5GW EM, 2038 SM2CEW KP, 2121 W7BBM DM, 2234 VE6TA DO, 2234 SM3AKW JP, 2314 K4QI FM, 2314 VE4SA EO and 2334 VA7MM CN. I ended with 40 QSOs and 15 multipliers for a score of 1,140 points. After the contest I worked two new stations. The first was a new OK station, OK1DST (559/539) for initial #206. The second station was OE3SJA. Hannes has a 2 m dish and 80 W in shack. Because he is not familiar with CW, we worked JT65c (23DB/17DB). [Zdenek reports his dish survived storm EMMA's 141 km/h winds without damage!]



Moon through OK1DFC's 10 m dish

**OK1DST:** Alex [kobranov@amoscz.cz](mailto:kobranov@amoscz.cz) is a new 1296 EME station. He has 2.4 m dish with rectangular septum polarizer feed, 2 x 2C39 PA (160 W max out, ~ 120 W on JT), 0.8 dB NF LNA, DB6NT xverter and IC910H. The PA installed in a commercially available dog house at the base of the dish -- similar to WW2R. Alex made his first QSO with G4CCH on JT65C on random. He has also QSO'd OK1DFC and heard others. He is working to further improve his stations and should be available for skeds.

**OK1TEH:** Matej [ok1tehlist@seznam.cz](mailto:ok1tehlist@seznam.cz) was QRV during the 16/17 Feb AW and writes -- On 70 cm CW I heard very well DF3RU (O), I1NDP (M), KL6M (M) and NC1I (O-M). I called NC1I for over 2 hours and nearly had a QSO, but we did not complete! On 70 cm WSJT I saw JA6AHB (25DB) but he didn't find me.

**ON4BCB:** Walter [om3wbc@geniusnet.sk](mailto:om3wbc@geniusnet.sk) sends his log for the 1296 EME SSB Contest. I worked on 16 Feb at 1326 VK3UM (54/54) QF22, 1356 LX1DB (57/55) JN39co, 1405 ON7UN (57/55) JO21ng, 1420 DL4MEA (54/53) JN58, 1422 G3LTF (54/54) IO91, 1440 OK1DFC (54/55) JN79, 1514 OZ4MM (56/55) JO55, 1524 SV1BTR (559/559) on CW, 1637 DK7LJ (57/45) JO54cg, 1940 G4CCH (54/55) IO93, 1946 K1RQG (55/56) FN54, 1952 IZ1BPN (53/54) JN34, 2117 K2UYH (55/55) FN2Ø, 2120 K5JL (55/55) EM15, 2155 VE6TA (55/44) DO33 and 2216 K9SLQ (56/55) EN7Ø, and on 17 Feb at 1426 HB9BBD (57/57) for a total score of  $(15 \times 2) \times 8 = 240$ . [The HB9BBD QSO was after the end of the contest and SV1BTR on CW]. The strongest stations were DK7LJ, LX1DB, HB9BBD and OZ4MM. Heard but not QSO'd were SM3AKW, IK3COJ, RW3BP, LA9NEA, IW2FZR and W7BBM. Tnx to DL4MEA for letting me work VE6TA after his QSO. It was lots of fun!

**OZ4MM:** Stig [vestergaard@os.dk](mailto:vestergaard@os.dk) writes about his activity during the SSB contest weekend -- I was on 1296 on 16 Feb and worked 8 stations. Very good signals, but I could only stay one hour as we had to leave for a family business. Later when we came back, I was happy to join the last hour of the first leg of the 70 cm CW ATP. I QSO'd 12 stations. It is very positive to see the renewed activity on 432. Many stations were again QRV in the ATP window.

**PY5ZBU:** Don [py5zbu@onda.com.br](mailto:py5zbu@onda.com.br) writes -- I am still fully active on both 432 and 1296. I read the comments by JH1KRC on the relative to lack of activity from South America. JA is an extremely difficult moon path from here with only a few minutes of mutual window per year relative to my grid, GG54dk. I am, however, interested in giving it a try. I plan to be more active.

**RD3DA:** Yuri <rd3da@list.ru> in KO85pt is active on 23 cm with a 3.7 m dish, 250 W PA and NE-334S-01 LNA. During the SSB Contest Yuri made 3 QSOs at 1922 HB9BBD (59/53) JN, 2019 K1RQG (55/53) FN and 2119 OK1DFC (55/559) JN SSB to CW for a score of  $(2 \times 2 + 1) \times 2 = 10$  points.

**RW3BP:** Sergei was QRV in the SSB Contest with his 2.8 m dish, new 700 W SSPA -- see last months NL and 0.24 dB NF LNA. He QSO'd at 1550 DK7LJ (55/45) JO, 1615 ON7UN (55/55) JO, 1930 HB9BBD (57/56) JN, 1949 K1RQG (57/56) FN and 2012 OK1DFC (56/55) JN for 5 QSOs all on SSB in 3 sectors.

**SM2CEW:** Peter [sm2cew@telia.com](mailto:sm2cew@telia.com) during the 16/17 Feb AW was active on 23 cm for a while and then switched to 432 for the CW ATP. On 1296 he worked SV1BTR on CW for a new one. On 432 Peter added an initial with SP7DCS.

**SM3BYA:** Gudmund [gudmund.wannberg@telia.com](mailto:gudmund.wannberg@telia.com) was active on 432 during the Feb CW ATP -- I worked during the first period (16 Feb 2200-2400) NC1I, DF3RU, I1NDP, SM2CEW, KL6M, SP6JLW, G4RGK, OZ6OL and OZ4MM, and in the second period (17 Feb 1400-1600) G3LTF, PA3CSG, RW3PX and DL7APV for a total of 13 QSOs. CWNR were VK4AFL and OK3RM. I also copied SM3JQU, SM3AKW and UA6LGH in QSO with KL6M right at the end of second period. OK3RM and UA6LGH would have been new initials.



OK1DST's new 2.4 m dish and dog house for SSPA

**SP6JLW:** Andy [sp6jlw@wp.pl](mailto:sp6jlw@wp.pl) with Jacek (SP6OPN) operated the SSB Contest on 23 cm in March from JO80jk. The station consisted of a 6 m dish, 8 x BLV958 SSPA and ATF 54143 0.6 dB NF LNA. QSO'd on 16 Feb were at 1141 VK3UM (54/54) QF, 1202 DK7LJ (57/22) JO, 1249 DL4MEA (54/53) JN, 1343 LX1DB (57/55) JN, 1430 OK1DFC (55/55) JN, 1452 ON7UN (58/57) JO, 1522 OZ4MM (56/55) JO, 1644 G3LTF (54/54) IO, 1753 IZ1BPN (43/44) JN, 1803 HB9BBD (58/56) JN and 1917 K1RQG (56/54) FN, and on 17 Feb at 0004 G4CCH (54/55) IO, 0016 K2UYH (43/55) FN, 0200 VE6TA (54/44) DO and 0236 K5JL (44/56) EM. All QSOs were on SSB and they ended with a score of  $15 \times 2 \times 7 = 210$  point.



SP6JLW's EME Site with 6 m dish and 8 yagis

**SP7DCS:** Chris [sp7dcs@o2.pl](mailto:sp7dcs@o2.pl) was QRV for the 70 cm ATP in Feb but missed the SSB Contest on 1296 -- I want to thank to all for QSOs on 70 cm. There was excellent activity during the ATP. Unfortunately I was not able to be QRV on 23 cm because of problems with my TCXOs 96 MHz oscillator. I had wanted to make my first EME SSB contact with my QRP 23 cm system. On 432 I worked on random CW SM2CEW for an initial (#), NC1I, KL6M, OZ4MM, I1NDP, DL7APV (#) and G3LTF (#). I heard PA3CSG (pile up), DF3RU, SM3BYA?, SP6JLW and RW3PX. The station was my 4 x 25 el yagis, 250 W PA and FHX35 LNA.

**SV1BTR:** Jimmy [jimmyv@hol.gr](mailto:jimmyv@hol.gr) sends his 16/17 Feb activity weekend report -- I worked 30 QSOs on Random on 1296 in a total of 7 hrs. I was on for 6.5 hrs in the SSB Contest. I lost electricity for some hours due to heavy winds, snow and ice. Sorry to K5GW - I lost mains right after my 579 report to him. I climbed high on the tower to poured water on the dish to avoid its freezing at midnight and 3 am local time. This was quite an adventure -hi! On SSB, I worked LX1DB, ON7UN, OK1DFC, K1RQG, K2UYH, VE6TA, G4CCH and Sunday at moonrise HB9BBD. Sorry for a K5 that I missed due to splatters! I could have easily worked 5-6 more stations on SSB, but I was also concentrating on CW and most stations called me on that mode. On CW I contacted LA9NEA, SP6JLW, VK3UM, JH1KRC, OK1DFC, ON4BCB, SM3AKW, G4CCH, IW2FZR, IZ1BPN, DL1YMK, ES90E, ON7UN, G3LTF, K9SLQ, SM2CEW, IK3COJ, N2UO, WA6PY, K4QI, NA4N and Sunday at moonrise VK4AFL. On Saturday signals and echoes were 4-5db weaker than usual, but conditions drastically improved after 1730. I had double echoes for 20 mins; one was louder by 4 dB and clear, the other weaker one distorted -- [What was the time delay difference]? I stayed at the EME QTH on Monday 19 Feb, as I could not get back to Athens due to snow and worked on 23 cm CW SV10E, PY5ZBU, W5LUA on CW and SSB, ON4BCB CW and SSB and OZ6OL. Thank you all for this fantastic weekend and plan to be back to the EME QTH 8/9 March for 23 cm (& 2) operation and 15/16 March for the 70 cm CW section of the European EME Contest!

**SV3AAF:** Petros [sv3aaf@yahoo.com](mailto:sv3aaf@yahoo.com) was active during Feb 70 cm ATP -- I found the amount of traffic and conditions above average, but with much QSB. I worked I1NDP, NC1I for an initial (#), OZ4MM, DF3RU, KL6M, G4RGK, PA3CSG and DL7APV. During the second period I had high winds. Each gust knocked my array 10 degs off target making operation very difficult. I had to stop my CQs was just monitoring for calls. I replied to a couple of stations, but no QSOs. I made some progress on my 23 cm project and was able to complete the dish extension and assembly.

**T19KK:** Fred [dh5fs@freenet.de](mailto:dh5fs@freenet.de) reports that the EME part of the dxpedition was bust -- I am sorry to report the amp failed right after the first transmission, so there was no EME from Coco... I focused on the dc bands afterwards. All in all I was not adequately prepared for EME operation. The conditions on the island were very hard - maybe next time. [No differentiation between 2 m and 70 cm was made in the e-mail. Was it the 144 or 432 PA that failed? I do know that there was some adjustment in their schedule to provide a better window for 70 cm operation. Let's hope that 70 cm operation is supported in the future].

**VA7MM:** Mark's [lunarlink@hotmail.com](mailto:lunarlink@hotmail.com) team was active in the both the DUBUS Digital EME Contest and the 1296 SSB EME Contest. Their report for the SSB Contest follows -- We note surprisingly good SSB signals, particularly from K1RQG. QSO'd were LX1DB (CW/SSB) JN, K1RQG (CW/SSB) FN, K1RQG SSB FN, OK1DFC CW, OK1DFC SSB JN, IZ1BPN CW, K2UYH CW/SSB FN, G3LTF CW, G3LTF CW/SSB IO, K4QI CW, K2UYH SSB FN, G4CCH CW/SSB IO. These contacts gave us a score of  $(3 \times 2 + 3) \times 3 = 27$  points. We have been active in recent contests and intend to operate in the European 1296 CW EME Contest later in the spring.

**VE3KRP:** Eddie [eddie@tbaytel.net](mailto:eddie@tbaytel.net) was active during the SSB Contest on 1296 -- I QSO'd on 16 Feb ON7UN on SSB for initial #33, OK1DFC on SSB, DK7LJ on SSB #34, K1RQG on SSB, LX1DB SSB #35 and K5JL on SSB. New initials and countries on SSB, I never thought this would have been possible with my small dish! Also worked on Sunday on CW were OZ6OL and W5LUA. I am now back to working on the GS-15B cavity project.

**VE4MA:** Barry <[ve4ma@shaw.ca](mailto:ve4ma@shaw.ca)> is back on 24 GHz: During the Feb AW I completed CW QSOs with DF10I and DK7LJ for initials #5 and #6. Both stations had very good signals with (O/O) reports exchanged with both stations. It has been nearly 5 years since my last QSO when TWT troubles knocked me off the air. I was using an SDR1000 RX today and both stations were FB on the waterfall display. DF10I had considerably more spreading on his signal than DK7LJ. The following weekend I worked LX1DB #7 on 24 GHz. I worked him (559/559) and then on SSB for my first ever SSB EME QSO on 24 GHz!

**VE6TA:** Grant [ve6ta@clearwave.ca](mailto:ve6ta@clearwave.ca) sends his SSB Contest results -- I worked on 16 Feb at 2130 K1RQG SSB FN, 2132 K2UYH SSB FN, 2142 OK1DFC SSB JN, 2149 DL4MEA SSB JN, 2152 ON4BCB SSB JO, 2158 ON7UN SSB JO, 2221 K9SLQ SSB EN, 2224 LX1DB SSB JN, 2240 SV1BTR SSB KM, 2300 G3LTF SSB IO, 2315 G4CCH SSB IO, 2325 K5JL SSB EM, 2334 IZ1BPN SSB JN and 2355 K4QI SSB FM, and 17 Feb at 0155 SP6JLW SSB JO for a total of 15 QSOs with all on SSB and 8 mults for 240 points.

**VK3UM:** Doug [tikaluna@bigpond.com](mailto:tikaluna@bigpond.com) reports on his Feb activity -- All the following QSOs were on 23 cm. On 10 Feb there was extreme QSB over about a 4 minute cycle -- some of the worst I have ever experienced. I worked OK1DFC (569/579), SM5LE (449/549), G3LTF (559/559), G4DZU (549/549), PA0BAT (449/559) for an initial (#). I added contacts on 16 Feb during SSB Fun Event SP6JLW (54/54) JO, DK7LJ (55/57) JO, ES90E (559/55) KO, DL4MEA (54/54) JN, ON4BCB (54/54) JO, LX1DB (57/57) JN, VK4AFL (55/53) QG, ON7UN (57/57) JO, OK1DFC (53/55) JN, G4CCH (55/55) IO, G3LTF (55/55) IO and OZ4MM (55/55) JO, SM5LE (549/559) and SV1BTR (569/559), and on 17 Feb K1RQG (55/57) FN, K2UYH (54/54) FN and JH1KRC (32/53) PM. I ended with a contest score of  $(14 \times 2 + 1) \times 7 = 203$  points. Deep QSB was also apparent on both days. I feel I must raise the question of the choice of Activity Weekends (AW) again. I know I am wasting my time, but here are the problems as seen from south of the equator. The obvious aspect of elevation is fortunately normally of little concern to me. But at a declination of 28 degs, although the Moon does get to 23 degs, I have zero horizon to the West and only 2 degs to the East! However, it is the local operating time that is of the greatest concern. My evening Moon rise corresponds to ~ 0300 in the US and my moonset into Eur falls similarly at 0300 local here. The result is that I go for months rarely hearing a US Station. (You cannot blame anyone for not coming on at that hour for just a couple of QSOs). If we were to move the AWs to a Dec between 5-10, you will find that Eu/USA/VK/Eu windows will then fall during 'sociable' hours. Check it out! Yes, I know you all need Moon elevations of > 25 degrees. Well that puts me at 1 degree or less to work you in my ground noise - if I get up at 0300 local! Michael and Monica's dxpedition to CX corresponds to the contest high Dec weekend, which leaves us with only 2 windows of < 15 minutes, but we have both been there and done it before at 35 wpm in 1 minute sequences! As I have said, I can only work those that are on, and I am the first to admit getting on at 0300 local to work a heap of Eur's is far better than a US station coming on at their 0300 to work the very few of us! I think it would foster more activity or allow many of us to work during gentleman/XYL compatible' hours.

**W0DRL:** Al [al.tyler@sbcglobal.net](mailto:al.tyler@sbcglobal.net) is making progress toward 70 cm EME operation after many years -- I have just finished a K2RIW amp and now I need select and mount preamp at the antenna. I been looking at the SSB 7000 it will handle 500 W by it self. What preamps are being used? [I have found WD5AGO's preamps to be excellent]. I need to switch around it during xmit and have forgotten how I did it back in 1973 when I was last QRV. Any suggestions are welcome. [There are many relays around that have low loss and more than adequate isolation on 70 cm for > kW. The (3) inline Transco, Dowkey, HP relays all work well. Try to avoid the Transco Y type].



**W5LUA:** Al [w5luu@swbell.net](mailto:w5luu@swbell.net) reports working on 16 Feb on 24 GHz DF1OI. He was not QRV on 17 Feb due to bad weather, but the following weekend QSO'd VE4MA and was heard by DL7YC on 24 GHz. He says there is more interest on 24 GHz and above. OK1KIR and DK3UC are interested and also already listening on 24 GHz. On 1296 Al worked VE3KRP.

**W8TXT:** Mike <no e-mail> worked 4 during the Feb 70 cm ATP. He QSO'd NC1I, KL6M, OZ4MM and DF3RU. He heard SV3AAF and I1NDP in QSO, but missed working them. Mike also tried the JA window. He got up early but heard nil. He thinks the problem may have been due to his yagis being out of alignment from high winds.

**WA6PY:** Paul [pchominski@maxlinear.com](mailto:pchominski@maxlinear.com) had only limited time to operate the SSB Contest this year, but still was able to get in on some of the fun -- I was QRV for only a short time during the 1296 SSB contest and QSO'd on SSB: LX1DB, K1RQG, K2UYH, OK1DFC, G3LTF, IZ1BPN and on CW SV1BTR. I called CQ once, but I had a hard time to catch one call from the QRM. Heard were SM3AKW, G4CCH and VE6TA, but I was forced to go QRT due to the other commitments.

**WA8RJF:** Tony [temanuele-kentdisplays.com](http://temanuele-kentdisplays.com) was on 23 cm during the SSB Contest -- I finally had a weekend day without high winds and snow. Saturday was a beautiful sunny day without wind but a bit cold at 30 degs. I installed the feed, preamp, etc. and around 2130 was ready to give a listen on 1296. Heard were K1RQG, K2UYH, OK1DFC, LX1DB and a DL station all on SSB with easy copy as well as a couple of CW stations. I gave K1RQG several calls on CW with no response and then called LX1DB for a while without any luck. I pulled the switch at 2300 for a family event. My commercial HV supply starts to current limit at 400 ma so I had to back off the drive and could only run 180 W. Some RF is better than no RF. With the weather slowly improving, I hope to be QRV more often looking for initial #1 on 1296.

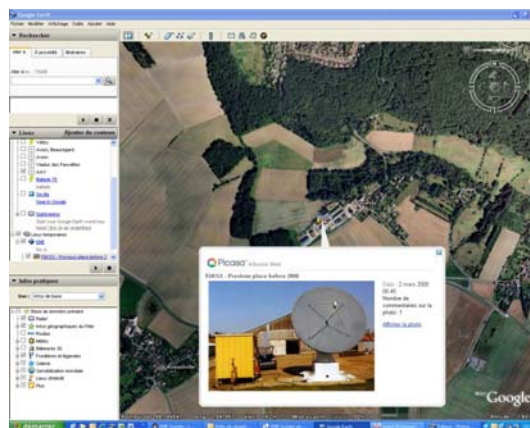
**K2UYH:** I [a.katz@ieee.org](mailto:a.katz@ieee.org) was QRV for the DUBUS Digital Contest and QSO'd on 9 Feb on 432 using JT65b at 1524 DL7APV (O/O), 1532 NC1I (O/O) and 1616 OH2PO (O/O), and on 1296 at 1644 OK1DFC (O/O), 1715 G4DZU (O/O), 1745 OK1CA (O/O), 1748 ES5PC (O/O), 1754 VA7MM (O/O) and 1812 G4CCH (O/O), and on 10 Feb on 1296 using JT65c at 1557 RD3DA (12DB/8DB), 1611 PA3FXB (O/O), 1630 RK3WWF (19DB/14DB) for combined initial #313\*, 1655 IW2FZR (8DB/11DB) - drift problem, 1805 WW2R (O/O), 1835 PA0BAT (O/O) and 1842 LA2Z (11DB/12DB) - drift prob. I tried to operate on 9 Feb during the VK/JA window on 432 but discovered a problem with my 8938 PA, which put me off 432 and that I have only recently repaired. I switched to 1296 but found no activity on JT. I ended with 15 QSOs with I believe 11 multipliers. The following weekend could I not operate the 70 cm ATP because of my PA problem, but was on for the 1296 SSB EME Contest. I worked on 18 Feb at 2025 OK1DFC (55/55) JN79, 2035 DL4MEA (55/55) JN58, 2038 ON7UN (56/56) JO21, 2042 K1RQG (56/57) FN54, 2053 IZ1BP4 (55/55) JN34, 2059 K5JL (56/57) EM, 2106 OZ6OL (55/55) JO05, 2114 ON4BCB (55/55) JO21, 2125 G4CCH (56/56) IO95, 2133 VE6TA (56/57) DO33, 2143 W7BBM (56/55) DM42, 2146 IK3COJ (55/55) JN65, 2151 IW2FZR (55/56) JN58, 2204 K9SLQ (58/57) EN70, 2207 LX1DB (59/57) JN39, 2226 N2UO (44/54) FM08, 2243 SV1BTR (55/54) KM05, 2306 G3LTF (55/54) IO91, 2311 N2IQ (55/55) FN13, 2316 WA6PY (55/56) JM and 2324 K4QI (55/55) FM06, and on 19 Feb at 0016 SP6JLW (55/43) JO, 0022 VA7MM (55/55) CN CW/SSB, 0111 VA7MM (44/55) CN, 0120 DF3RU (55/55) JN, 0610 AL7RT (55/55) BJ CW/SSB, 0630 JH1KRC (55/55) PY and 0730 VK3UM (54/54) QF. All QSOs were on SSB except for AL7RT who was worked CW/SSB. Ray's signal seemed very spread on SSB. I ended with a score of  $(26 \times 2 + 1) \times 15 = 795$  points. I was a little disappointed with the Asian window, but to have VK3UM come through on SSB with my dish well into the trees (< 20 degs) was a great way to end the contest! I thought this SSB contest was one of the best of recent years and hope others had as much "fun" as I did. I also ran on 3 Feb a horizon sked on 70 cm CW with WA9KRT, but had nil results both ways.

**NETNEWS BY G4RGK:** **K0YW** reports the TS-2000 pins for control of the ALC line from an external PA are Pin 7 for 432 and Pin 8 for 1296 -- see page 96 of the manual. **NA4N** worked K9SLQ and ES5PC in Jan. **G4FRE** (WW2R) copied OZ4MM on the 432 during the Feb ATP using a 19 el F9FT yagi and KB2AH cavity preamp. **OK1KIR** copied VE4MA on 24 GHz during the AW and will be looking for LX1DB. **DK7LJ** is reported to have a new SSPA that can run 3 kW at his feed! **G4ALH** was active during the Feb 70 cm ATP and worked NC1I with 4 short yagis. **W7MEM's** 432 antenna is back up. **F1PYR** is QRV on 23 cm with a 3.5 m dish, AGO preamp and 200 W PA. **K5SQ** is working on Hydrogen line mapping and very happy with his radio astronomy results. He has converted his hydraulic system to the same type as K1RQG pleased with the change. **VE4SA** is working on 13 cm equipment and reports he

became a dad for second time a couple weeks ago! **RA3EC** at [ra3ec@inbox.ru](mailto:ra3ec@inbox.ru) will be QRV on CW 2008 EME contest on 70 and 23 cm. **SM4IVE** updates us on the new 13 m dish. Lars is struggling with MIG welding of Aluminum, but has a friend coming over with TIG welder.

**FOR SALE:** **WD5AGO** has for sale a 70 cm Hygain 70-31 yagi extended to 35 Elements with which he had worked 15 stations on EME (CW) for \$75. He also has some 144 and 222 yagis for sale. Contact Tommy at [wd5ago@hotmail.com](mailto:wd5ago@hotmail.com). **VE4MA** is looking for GS-15 23 cm cavity PA. **K0WOW** has quantities of quality chip capacitors (ATC). Jack does not want to sell one or two but strips of them. **ND2X** is looking for a 16 to 20" dish. **K3GYS** in Marlton, NJ has a dish available for free. It has 24 aluminum ribs that are riveted construction and the center connection is a beautifully welded aluminum hub. The surface is mesh. There is a central post for a feed. If interested contact Rick, [k1ds\\_rick1ds@hotmail.com](mailto:k1ds_rick1ds@hotmail.com).

**F1EHN's EME System Software** next version (V7) will be available in a few weeks. JJ has added a feature that links to display the EME common windows or the DX station location within Google Earth. He wants to be able to show a picture/photo of the DX station. He has tested this feature and it is now running well, but to show/display a photo, I have to have the photo!!! So I am planning to organize a photo database of EME antennas with their exact location (lat, lon with an arcsec or thousandth of ° accuracy). Does anyone know if such a data base exists? Do EMEers think it is a good idea to create it? I am open to create one. Of course, all will be free as is my software. Please e-mail me your opinions at [jim\\_flehn@wanadoo.fr](mailto:jim_flehn@wanadoo.fr) [I suggest you include with your reply: 1] a photo of about 640 x 480 pix or greater with jpg format named as ex. "f6ksx.jpg", 2) A title for this photo as exp. "F6KSX 3 cm 3.3 m dish", 3) latitude/longitude as exp. "48.745 N, 2.045 E" (the exact location/position of the antenna), 4) Your grid square (locator), and 5) The name of the nearest city to check the location of the photo].



Example of picture to be display by F1EHN's Software

**FINAL:** Earlier in this NL VK3UM discussed the difficulties of operating in the Southern Hemisphere during the current high DEC AWs. Bernd, DL7APV's responded as follows: My goal in selecting the ATPs was to have them at or near perigee. The most important reason to have the ATP is to catch new stations and most of them need as much help as they can get. The 2 dB plus at perigee is helpful.

OK1DFC has created a web site DL1YMK's EME dxpedition and will put all available info and pictures as he did for the P43L dxpedition at <http://www.vhf.cz/seminare/2008/CX08ymk.htm>.

Going to Dayton? **WA8RJF** and **WA8WZG** invites EMEers to the 15th Annual VHF Weak Signal Group banquet to be held on Friday evening 16 May at the Holiday Inn Dayton North, 2301 Wagner Ford Road, Dayton OH 45415. The cash bar opens at 6:15 PM with plenty of room to mix and mingle. The two entrée sit-down dinner will be served starting at approximately 7:15 PM and with prizes drawn at 9 PM. Reservations are required. Seating is limited to 125 and spouses are welcome to join us and are eligible for the prize drawing. For tickets please send \$35 per person and an SASE to: Tony Emanuele, **WA8RJF**, 7156 Kory Court, Concord, Ohio 44077-2221. Please include the names and calls of all attendees as well as an e-mail address. For more information contact Tony at [WA8RJF@ARRL.net](mailto:WA8RJF@ARRL.net).

Please note that when I show JT reports I am not show the minus sign and running report and dB in capital together -- for example (14DB).

Also don't forget to make your reservations for Florence-EME2008, [eme2008@ari-crt.it](mailto:eme2008@ari-crt.it).

We can use more technical material and please keep the news coming. I will be looking for you on 70 cm this month. Good luck in the DUBUS Contest and 73, Al -- K2UYH.